



Introduction

Welcome to the Summer '21 edition of the CCC Education Matters Newsletter and thanks to everyone who sent in contributions, making this an issue packed full of exciting news and updates!

As usual, it has been a very busy time on the education front since the last edition, as we continue to overcome the challenges of the pandemic. We remain committed to supporting all our students and staff in providing excellent education and training opportunities. This issue showcases some great examples from all areas of the Trust, including Radiology, Radiotherapy, Research & Innovation, Physiotherapy and also from the Cancer Alliance. Do have a look at the spotlights on some outstanding individual achievements of our staff, and read about our fabulous new library service going live on 1st August 21.

We are excited to launch our brand new joint CCC/University of Liverpool MSc in Cancer Care, part-time and starting in Sept 21. Details of all the modules, which can be taken as stand-alone also, are included in this edition, along with all the Clinical Education virtual courses and workshops coming up.

Take a look at the great feedback we have received ...and book early to avoid disappointment! Don't forget to read up on CPD funding opportunities for nurses and AHPs in this issue and how to access.



Finally a warm welcome to all the new Resus Jeff's!! Read on to find out more!

This quarterly newsletter provides you with a brief overview of key education activities from all areas of the Trust, to include Clinical Education, Medical Education, Learning & Development & OD and Research & Development. The newsletter aims to keep you up to date with the latest news and opportunities, tools & resources & updates on key education & training topics.

I hope that you find this education newsletter both informative and valuable. I welcome your ideas and input into future issues.



Kate Greaves
Associate Director of Clinical Education



Isabel Syndikus
Consultant in Clinical Oncology Director of Medical Education



Radiology News

3rd Year Diagnostic Radiography students

We have recently said goodbye and well done to our six 3rd year Diagnostic Radiography students who have been with us at CCC learning the clinical aspect of the job. They have all been an absolute delight and pleasure to have in the department and we wish them all the best in their future careers. Two of them have been employed by CCC and the other four all have employment in the local area. Congratulations to them all!

Deputy Clinical Tutors

Congratulations to Elle Aspden and Alaina Grant who have been appointed to the role of Deputy Clinical Tutors in Radiology. The role of Clinical Tutor (and deputy) is fairly new within Radiology and we are excited to see how the educational and professional development aspects of the department can be developed.

MRI Postgraduate Module – UoL

In September 2021 the University of Liverpool will be starting a new postgraduate MRI module for Radiographers who are either newly qualified or new to MRI. The module will include MRI safety, MRI physics, introduction to scanning, and there will also be hands on experience in MRI departments. We are proud that our CCCL MRI Specialist Natalie Wilson will be teaching on the course.

Clinical Placement Expansion Programme

The Clinical Placement Expansion Programme (CPEP) project was launched to increase pre-registration placements across Cheshire and Merseyside. Across many departments at CCC, we have excellent and very well established student networks. Within Radiology and Radiotherapy, with the support of all of our staff, we have increased our intake of students over the last few years. This is something we are very proud of and take great pleasure in being a part of shaping the next generation of

Diagnostic and Therapeutic Radiographers. For participating in the project we have received a small pot of money and plan to spend it on laptops and other educational materials for the students to enjoy. Thank you to everyone who supports our students at CCC.

Exciting News from Cheshire & Merseyside Cancer Alliance

CMCA have embarked on an exciting new project to create an online learning and education platform to support the development of our Cancer Workforce across Cheshire and Merseyside.

The team are working in collaboration with Clinical Education at CCC along with the support of the Clinical Lead Dr Debbie Harvey to centralise access to all training events and resources. Currently in the planning phase, the team are hoping to launch phase 1 of the Cancer Academy later this year.

If you would like to find out more please contact Lucy Irwin, Project Manager- lucy.irwin1@nhs.net.





MSc in Cancer Care

We are delighted to announce the commencement of MSc in Cancer Care. This is a new and innovative academic programme produced and delivered by the Clatterbridge Cancer Centre, in partnership with the University of Liverpool for launch in September 2021. The programme is designed for registered nurses, health and social care professionals who provide care for people with a cancer diagnosis within their care setting and who wish to develop their own practice in the holistic care of the person with cancer.

This multi-professional part time 3 year programme will allow registered healthcare practitioners to undertake Masters level study whilst continuing with their NHS roles.

Health Education England (HEE) have allocated £1,000 per Nurse and AHP to use for professional development and is available through the Study Leave Process, further details can be found on page 7 and the Intranet.



From	Bridget Porritt, University of Liverpool
Sent..	14 th May 2021
To..	Kate Greaves, Clatterbridge Cancer Centre
Subject:	MSC Cancer Care University Approval Panel Outcome

Dear All,

Some good news to share re the MSc Cancer Care programme which yesterday was granted approval by the University Approval Panel (UAP), subject to minor changes.

A true collaborative approach has got the programme to this stage and I'm sure we are all looking forward to our first intake in September 2021!

I want to personally thank Bev Ball and Denise who led the programme through the final and most important stages of development and approval.

Sincere thanks also to Kate and the entire Clatterbridge team for their innovative ideas, hard work, support and positivity.

Best Wishes Bridget

Bridget Mary Porritt (She/Her)
Senior Lecturer, Fellow (HEA),
Head of BSc (Hons) Therapeutic Radiography & Oncology and Post Graduate Diploma Radiotherapy
School of Health Science, Institute of Population Health, University of Liverpool
1.11 Johnston Building, The Quadrangle, Brownlow Hill, Liverpool L69 3GB
T: +44 (0)151 795 0394 M: +44 (0)7446826652
bporritt@liverpool.ac.uk www.liverpool.ac.uk/health-sciences



UNIVERSITY OF
LIVERPOOL



The Clatterbridge
Cancer Centre
NHS Foundation Trust

MSc in Cancer Care

Programme Overview

The MSc Cancer Care is a programme produced and delivered by The Clatterbridge Cancer Centre NHS Foundation Trust and University of Liverpool.

The programme is designed for registered nurses and other health and care professionals who provide care for people with a cancer diagnosis within their care setting, and wish to develop their own practice in the holistic care of the person with cancer.



The broad impact of a cancer diagnosis and the complex journey of the patient and those important to them will be critically explored, enhancing awareness of individual needs and the provision of a holistic, patient-centred approach to care. Learners will critically explore their own practice in the holistic care of people with cancer, in order to influence development of others (peers/teams) and/or services they support in their role.

The programme will enable students to further their educational and professional development within the specialty of oncology, to drive forward practice improvements, expand the evidence base, and improve care for all cancer patients.

Read more and apply via liverpool.ac.uk/study/postgraduate-taught/taught/cancer-care-msc/applying/

Application Deadline: 31st July 2021



Modules

Level 6 (20 credits each)

- Fundamentals in Cancer Care
- Fundamentals in SACT Administration and Care
- Fundamentals of Palliative and End of Life Care

Level 7 (20 credits each)

- Developing Practice in Cancer Care
- Developing Practice in SACT Administration and Care
- Developing Practice in Palliative and End of Life Care
- Developing Practice Supporting Those Living with the Consequences of Cancer and Cancer Treatment
- Research Methods
- Development of Leadership in Health and Social Care
- Reflection in Professional Practice
- Work Based Learning
- Supporting Learners in Practice
- Taking Pride in Cancer Care: Person Centred Care for LGBTQ+ people with cancer
- Advancing Practice in Prostate Cancer Management and Patient Care
- Advancing Practice in Breast Cancer Management and Patient Care
- Advancing Practice in Gynaecological Cancer Management and Patient Care
- Advancing Practice in Head and Neck Cancer Management and Patient Care
- Advancing Practice in Colorectal Cancer Management and Patient Care
- Advancing Practice in Lung Cancer Management and Patient Care
- Generating and Using Professional Evidence
- Magnetic Resonance Imaging (MRI) in Radiotherapy
- **Dissertation (60 credits)**

The majority of modules offered on our MSc Cancer Care programme are also available as credit-bearing standalone modules which can be taken to continue your professional development.



Entry Requirements

Health professionals in health and social care settings who are already registered with the HCPC, NMC or GMC, or who are working in a health and social care setting.

International Applications

Evidence of English Language required. IELTS at 6.5 with no component lower than 6 or Pre-sessional English. This programme accepts both Home and International students.

Tuition Fees

<https://www.liverpool.ac.uk/study/postgraduate-taught/taught/cancer-care-msc/fees/>

Start Date

September 2021

Enquiries to: Bridget Porritt

Email: B.Porritt@liverpool.ac.uk

Admissions Enquiries to:

Tel: 0151 795 6000

Email: shs@liverpool.ac.uk



North West England Nursing Midwifery & Allied Health Professionals (NMAHP) Research Capacity & Capability Strategy 2021 - 2024



We are delighted to share with you the new North West Nursing, Midwifery and AHP (NMAHP) Research Capacity and Capability Strategy 2021-2024 that launched on the 17th May 2021 by NHS R&D North West

The main focus of the Strategy is to:-

- Create a vibrant and growing NMAHP research culture across health and social care that is underpinned by core commitment from employers who recognise the value of a research active workforce.
- Provide clarity and support for regional research career development pathways, training and fellowships for NMAHP research careers in both health and social care.
- Invest in and support research talent within the NMAHP workforce, to maximise research career potential and enhance NMAHP retention and recruitment across the region.
- Develop those professionals who wish to attain research competency through a clinical research delivery route, thereby delivering and supporting research led by others.
- Provide equitable access and opportunities to research career development for health care professionals from both the NHS and social care.

The full strategy can be found by following the link [here](#)





Calling All Nurses and AHPs Continuous Professional Development Funding and how to access it!

£150 million has been made available from Health Education England (HEE) to enable employers to provide a £1,000 training budget for each NHS nurse, midwife and AHP within Trusts. This offer, over a 3 year period, started last year and many of you have already taken advantage of these funds to support your education and development. CCC's allocation of

funds for this year are now available and the Trust would like to encourage its Nurses and AHPs to apply for funding for relevant professional development, training and education courses.

So how do you access it? The process is simple; all you have to do is apply through Study Leave.

Study Leave Committee Meeting Dates

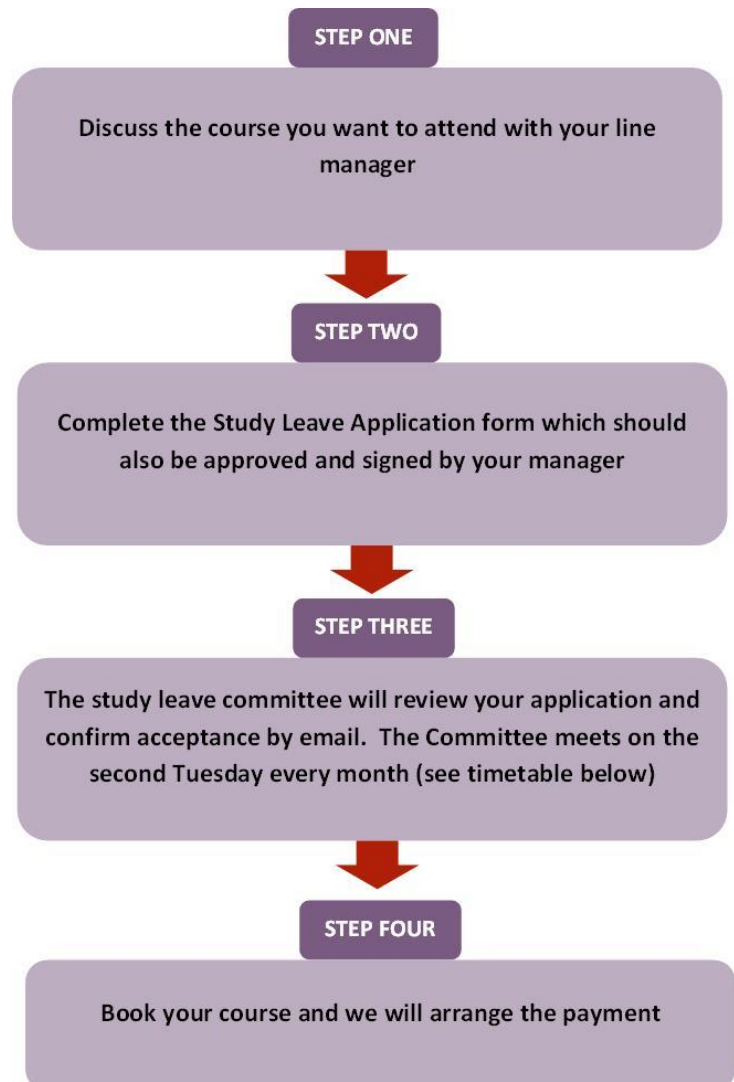
A Committee sits every month to review all study leave applications on the second Tuesday. Following the meeting, you will be notified by email of the panel's decision and if approved, your chosen course will be funded directly with the course provider.

Date of Study Leave Meeting	Cut-off date for Study Leave Applications
8th June 2021	4th June 2021
13th July 2021	9th July 2021
10th August 2021	6th August 2021
14th September 2021	10th September 2021
12th October 2021	8th October 2021
9th November 2021	5th November 2021
14th December 2021	10th December 2021

Application Form

A Study Leave Application form should be completed, signed by your line manager and returned with a copy of your mandatory training compliance record to ccf-tr.clinicaleducation@nhs.net

A copy of the application form can be found on the Intranet or request by email to the above email address.





Jackie Rooney gains a place on the National QNI Executive Nursing Leadership Programme

Having been awarded the Queens Nurse title in 2020 Jackie Rooney Divisional Nurse Director has recently been successful in gaining a place on the National QNI Executive Nursing Leadership Programme.

Funded by the National Garden Scheme the programme is delivered by a combination of online and residential sessions over a six month period. The main focus of the programme is on:

- Community and Primary Care Nursing
- Strategic thinking to enhance efficiency and productivity, whilst working with decreased budgets and resources
- Leading transformational change and building resilience for yourself and your team
- 'Leading beyond Covid-19' and transformation of cultures within the health and social care setting
- Leading with kindness and compassion.

All participants have access to a mentor to assist with their development as a leader and to focus on their professional career aspirations and development.

Jackie says *"I am delighted to have been successful at interview and the opportunity to undertake this development. I now appreciate the difficulties and nervousness of having to perform at interview over Teams!"*



Sadly due to Covid the first module was held over teams but as a group of 12 diverse senior nurse leaders across the country we gelled very quickly and are looking forward to meeting up in London when conditions allow.

My Mentor is a very experienced Chief Nurse from a large London NHS Trust and I look forward to learning and being challenged by somebody so experienced"

I pride myself on being a highly visible leader ,supporting staff to develop, make improvements and share learning; however the opportunity to be part of the QNI Executive leadership programme would enable me to be challenged about my perceptions of leadership and the ability to challenge and learn from other senior nurses as I embark further on my leadership journey"

Congratulations Jackie!



Clinical Education's Short Courses

Book your place early to avoid disappointment

INTRODUCTION TO ANATOMY AND CANCER

This one day course is aimed at any staff working in a health or social care setting who would like to increase their understanding of the human body and the impact of cancer on body systems. As it is an introductory level course it may not be suitable for Registered Health Professionals

Course covers:-

- Introduction to the human body
- What is cancer?
- Cancer and the digestive system
- Cancer and the immune system
- Cancer and the reproductive system
- Cancer and the respiratory system

On completion of the course students will receive a certificate of attendance.

Course Date: 23rd November 2021

Cost: £60 or **FREE** to CCC staff

To book a place please visit our website <https://education.clatterbridgecc.nhs.uk/> and complete the booking form under Workshops and Short Courses

Email: ccf-tr.clinicaleducation@nhs.net

Tel: 0151 556 5790



NATURE OF CANCER COURSE

This course provides an introduction to the nature of cancer and is primarily aimed at non-clinical staff. It is also suitable for health and social care practitioners and those wishing to increase their understanding of cancer. The course consists of 2 days and includes the following sessions:

- Understanding cancer
- Early detection and diagnosis
- Radiotherapy
- Chemotherapy
- Metastatic spread
- Health promotion

Upcoming dates:

- ~~11th & 12th October 2024~~ Course full
- 9th & 10th March 2022

The course costs £120 or FREE to CCC employees

To book your place on the March 2022 course, please visit our website <https://education.clatterbridgecc.nhs.uk/> and complete the booking form under Workshops and Short Courses.

NATURE OF CANCER COURSE PLUS

This two day course is for staff who have attended the Nature of Cancer Course or for any clinical staff working in a health or social care setting who have a basic understanding of cancer and its treatments but who would like to further develop their knowledge in this area.

The aim of the course is to introduce the biological and genetic processes involved in the development of cancer and their relationship to cancer treatments and includes the following:

1. Epidemiology of Cancer - an introduction
2. Cancer and the Immune system
3. Cancer therapies - now and the future
4. Helpful communication and support

The course will take place on the 16th & 17th November 2021 and costs £120 per person or FREE to CCC employees

To book a place please visit our website <https://education.clatterbridgecc.nhs.uk/> and complete the booking form under Workshops and Short Courses



Therapeutic Communication in Health Care

In the context of serious or life-threatening illness/frailty, this interactive study day provides you with the opportunity to:

- Explore the role of therapeutic communication in enabling a person-centred approach to identifying and meeting the concerns, needs and priorities of patients/families in a way that they feel is helpful to them
- Gain Top Tips on therapeutic communication approaches/skills and person-centred strategies and structures that enable individualised gathering and giving of information to support patient/family and professional well-being and satisfaction

Suitable for:

Any care professional who communicates with people facing or affected by serious or life limiting illness/frailty, and directly responsible for gathering and giving information, including as part of identifying problems, needs and concerns. E.g. Doctors, Nurses, Radiographers, Allied Health Professionals, Senior support workers (i.e. specifically involved in gathering patient information as part of assessment), Social Workers.

When:

9th November 2021

Where:

Via Virtual Online Classroom on Microsoft Teams. Important! You will need access to a quiet space with a laptop/computer or electronic tablet – with video and audio function. Joining and other supportive instructions will be sent before the workshop.

Cost:

£60 per person and **FREE** for CCC employees.
Discount to teams/services that book 5 places – get the 6th place free!

To book a place please visit our website <https://education.clatterbridgecc.nhs.uk/> and complete the booking form under Workshops and Short Courses.

Clinical Education Email: ccf-tr.clinicaleducation@nhs.net Tel: 0151 556 5790





Compassionate Communication in Healthcare A Fundamental Level Communication Skills workshop

Would you like to develop your knowledge, skills & confidence in how to explicitly communicate compassionately?

If so, then this interactive workshop day will be useful to you. The workshop will give you opportunity to:

- Explore the individual communication support needs of patients (families) who are facing/dealing with serious life threatening illness
- Recognise the different ways that people express their distress & concerns - whether that be by being upset, angry, anxious etc.
- Gain Top Tips on communication approaches that help you identify and respond to individual distress in a compassionate way (within the boundaries of your role) that best supports the well-being of the individual and yourself.

Suitable for:

Any care professional whose role brings them into communication contact with people facing or dealing with serious life threatening illness, but not directly responsible for formal assessment or planning of care or treatment. E.g. Health Care Assistants, Social Care Staff, Medical Secretaries, Ward Clerks, Support Staff, Porters, patient transport/drivers, volunteers, other support staff etc.

When:

Monday 4th October 09:00 – 16:00

Where:

Via Virtual Online Classroom on Microsoft Teams. Important! You will need access to a quiet space with a laptop/computer or electronic tablet – with video and audio function. Joining and other supportive instructions will be sent before the workshop.

Cost: £60 per person and **FREE** for CCC employees.

Discount to teams/services that book 5 places – get the 6th place free!

To book a place please visit our website <https://education.clatterbridgecc.nhs.uk/> and complete the booking form under Workshops and Short Courses.

Clinical Education Email: ccf-tr.clinicaleducation@nhs.net Tel: 0151 556 5790



Advanced Communication Skills Training (ACST) for Senior/Experienced Health Care Professionals

Taking our courses fully online – how is it going?

Since halting the popular face to face ACST courses (during this time of COVID related safety restrictions), May 2021 saw the successful delivery and excellent evaluation of our first fully online ACST course. We have on-boarded with Frontline Communications' to deliver a new blended approach of e-learning and live online 2-day workshops. The courses are popular and already our first 6 courses for 2021/22 are fully booked. The courses are available to CCC Staff and wider. We are inviting staff to still come forward and register their interest to joining our current reserve list for courses, so we can update them on any cancellations or new course dates from Spring 2022 and into 2023.

ACST Courses for 2021/22	
May 2021	FULL
June 2021	FULL
Oct 2021	FULL
Nov 2021	FULL
Jan 2022	FULL
Feb 2022	spaces available

For enquiries & registering your interest, Email: ccf-tr.clinicaleducation@nhs.net
REF: ACST Courses

Our May 2021 group was a mix of Medical and senior/experienced Nursing and AHP staff. **100%** rated highly that they:

- Would recommend the course to colleagues.
- had an **excellent** learning experience that met individual learning needs through enhancing their knowledge and confidence relating to a range of communication situations that often feel challenging in practice – whether that be with patients, family or colleagues.

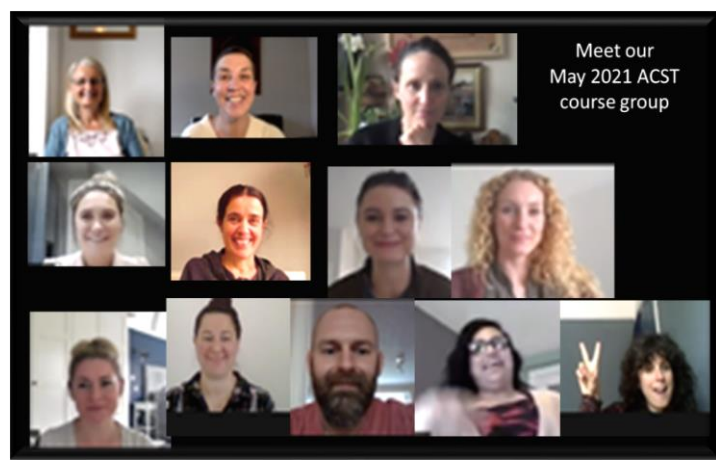
- Felt the course elements* were extremely useful and relevant to their practice.

*course elements: the eLearning experience (which involved video clips of communication scenarios and reflective practice), and the interactive 2-day workshops (that involved role play, supported by experienced facilitators and actors).

"I have been overwhelmed by this whole, course; it was above my expectations".

"Learning specific skills to gather the patient's agenda before going with my agenda –learned how helpful that was to both of us"

"Opportunity to learn & practice useful strategies such as Breaking Bad News; being clear, honest, but also helpfully responsive to patient's emotions".



"Not to feel overwhelmed by hearing a person's emotional 'story'; they don't need me to 'fix' everything; they need me to show I can listen, acknowledge & empathise with their situation"

"Have a better understanding of distressed & angry patients/relatives & how to respond in a helpful & non-confrontational way; feel more confident".

"Made me think about the way I give information; learned how to make it more helpful & understandable to my patient by tailoring it to their need". This felt more satisfying for both the patient & myself"

100% recommended the course



Linda Williams our Chief AHP,

has written 5 chapters for an important Radiography Textbook



The 3rd Edition of Carver and Carver Medical Imaging will be released on 30th June 2021. Linda Williams our Chief AHP has written 5 chapters of this well presented book that is used widely across many schools of radiography.

The approach taken by the authors compromises evidence based techniques for optimum practice and alternative methods for image acquisition. It not only offers core information for the developing practitioner but also discussion and reflection in this ever expanding field for those wishing to develop into more advanced practice.

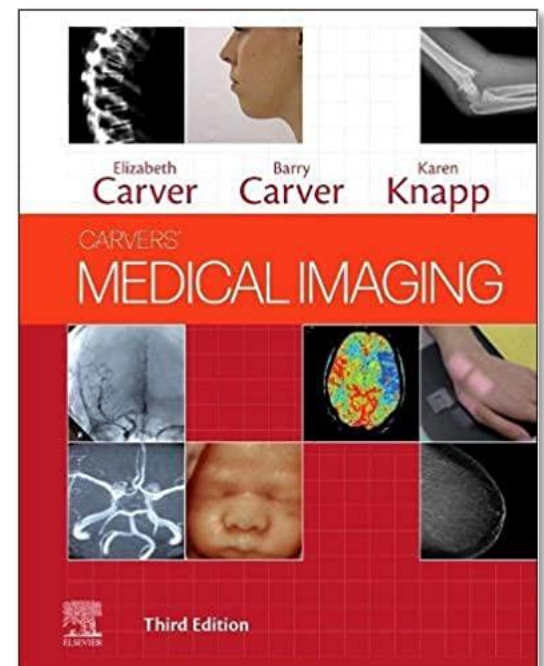
The third edition of *Carvers' Medical Imaging* supports radiography students to take a reflective, evidence-based approach that will enhance their practice.

This important textbook comprehensively covers the full range of medical imaging methods and techniques in one volume, and discusses them in relation to imaging principles, radiation dose, patient condition, body area and pathologies. It encourages the student to critically analyse their work rather than simply carrying out tasks.

The book has been updated by an impressive team of contributors including, Linda, to align with developments in both radiographic techniques and the role of the radiographer.

It is an essential companion for students of BSc (Hons) diagnostic radiography, those undertaking a foundation degree in radiographic practice or bachelor of medicine, and postgraduates alike.

- Comprehensive, fully illustrated and well referenced discussion of all imaging techniques.
- Full image evaluation for radiographic examinations, including common errors
- New material on potential impact of errors on accuracy of the radiographic report
- New sections on preliminary clinical evaluation for projection radiography examinations, which prepares students for UK professional standards
- Section on cross infection implications (relevant post COVID-19)
- Includes imaging of children with suspected physical abuse





NRICAM Bitesize Research Workshops for Nurses, Midwives, AHPs and students

Bring your questions and lunch
No prior experience necessary

Our third workshop is: 'Critically appraising papers'

21st July 12.30-1.30pm

led by Pete Bridge, Therapeutic Radiographer

Places are free but limited to just 25 – so sign up early via:

<https://www.eventbrite.co.uk/e/nricam-bitesize-research-worshops-critically-appraising-papers-tickets-158977769789>

Sessions will be via MS Teams

FUTURE SESSIONS

- Qualitative research
11th August 2021
- Quantitative research
17th September 2021
- Statistics and data
analysis October TBC
- NHS and University ethics
18th November 2021

WATCH THIS SPACE FOR

- Finding research funding
- Writing grant applications
- Costing up your research
- Tips for running your research
project
- Disseminating your research
- Managing and citing references

Follow us on Twitter:
@NMAHP_CandM

School of Health Sciences



Research Studies in Progress and Set-up

Gynae Cancer Narratives Study

Collaboration with Lancaster University.

Full Title: Radiotherapy Narratives: Exploring the lived experiences of patients undergoing radiotherapy treatment for cancer

This project explores how patients experience radiotherapy for gynaecological cancer with the aim to increase understandings of how radiotherapy impacts on social, personal and sexual lives. The objective is to develop a range of resources for use by patients and practitioners in order to provide more support for cancer patients in the North West. Patients are invited to keep journals on their experiences of radiotherapy from consent to six months after treatment has finished. To date 28 patients have been recruited.

~~~

### CCC Staff Wellbeing Study

*Collaboration with Liverpool John Moores University & University of Liverpool.*

**Full Title: Exploring the impact of COVID-19 on the psychological wellbeing of CCC oncology healthcare professionals**

The aim of the study is to understand how oncology healthcare professionals working at The Clatterbridge Cancer Centre manage their wellbeing during the COVID-19 pandemic, the coping strategies and support systems they use, and what, if anything, can be done to better support them. A total of 102 healthcare professionals have been recruited from across five staff groups - medical staff, radiographers, nurses, allied health professionals (non-radiographers) and healthcare/cancer support workers.

Staff are invited to keep diaries on their experiences for a period of up to 4 months. Fifty diaries have been submitted. In addition, 35 interviews have been completed with staff. The research team are currently analysing the data.

The research team included two students from Liverpool John Moores University who were undertaking an MSc in Health Psychology. The students supported data collection and analysis for the study, providing an excellent example of collaboration and shared learning between the Trust and University.

~~~

Nurse Wellbeing across Cheshire and Mersey during COVID Study

Collaboration with Liverpool John Moores University, University of Liverpool, Liverpool University Hospitals NHS Foundation Trust & Liverpool Clinical Commissioning Group.. Funding secured from The Burdett Trust for Nursing.

Full Title: Exploring the impact of the COVID-19 pandemic on the psychological well-being of nurses working in the cancer setting across Cheshire and Mersey

This study will explore nurses' experiences of the psychological impact of COVID-19 on their day-to-day care and support of patients with a diagnosis of cancer. Questionnaire surveys will be used to investigate levels of resilience, anxiety, wellbeing and coping amongst 300 registered nurses, with interviews and focus groups being used to explore individual experiences and discuss the implications arising from the results of the study, respectively.

~~~





## REAP-CCC Study

Collaboration with Liverpool John Moores University, University of Liverpool, Liverpool University Hospitals NHS Foundation Trust & Liverpool Clinical Commissioning Group

### **Full Title: Reducing Emergency Admissions for Patients with Cancer Complications and/or Co-morbidities**

The study aims to explore the reasons for the emergency department attendance and admission by patients with cancer (type 3 presentation), and the potential wider contextual influences, such as demographic, social and environmental factors leading to such occurrences.

This will enable us to develop interventions and strategies to reduce unnecessary admissions amongst this group of cancer patients. The study has received ethical approval and is currently paused until the risks associated with the pandemic, and its impact at the Liverpool University Hospitals NHS Foundation Trust, have reduced.

**Lynda Appleton**  
Research Nurse

## CCC Physiotherapy Cheshire and Merseyside AHP Faculty

The Physiotherapy Department at Clatterbridge Cancer Centre have been working with the Cheshire and Merseyside AHP Faculty to develop a pan-organisational Band 6 skills passport (for a specific Band 6 Physiotherapy cohort).

The aim of this is to provide a working document that can travel with Specialist Band 6 Physiotherapists across Hospital Trusts and services to ensure their



learning and development is cohesive and effective. Giving Physiotherapists a tool to understand where they are in their career and help them create their own individual pathway to where they want to be.

The passport aims to help them understand the skills and competencies they need to display in order to achieve their goals.

The Physiotherapy service at Clatterbridge Cancer Centre has worked to bring together other specialists in Palliative Physiotherapy across the region to ensure that the passport will help nurture and develop our specialists of the future. We will now help in the pilot phase of this work stream and look forward to seeing the plans in action.







## Meet Clinical Education’s Newest Recruits Jeff, Jeff, Jeff, Jeff and Lauren!

We are delighted to introduce Lauren Attwood who joined Clinical Education in April.

*“I joined the Trust last October as the Resuscitation Officer for CCC and moved to the Clinical Education Team in April. I have a background in A&E nursing, starting out as a HCA before being seconded to complete my nurse training.*

*During my 13 years in A&E I worked in 3 different Trusts and in varied roles within the A&E department, from Triage and treating minor injuries, dealing with cardiac arrests and traumas in Resus, to coordinating the running of the Department.*

*I made the leap to education 4 years ago when I became a Clinical Educator at Aintree University Hospital, where I worked across Clinical Skills, Simulation and Resuscitation and qualified as an ALS Instructor and Director.*

*In my spare time I am kept busy with my 2 boys, but when I get the chance I enjoy crochet (not sure how good I am though!) I’m a purple belt in MMA and I’ve just started to learn how to roller skate.*

*I deliver the BLS and ILS training (with the assistance of my manikins, who are all called “Jeff”!) throughout the Trust as well as teaching ALS at Aintree, The*

*Royal and Arrowe Park when I get the chance. I’m working on more courses to bring to CCC, so I look forward to meeting as many staff as possible.”*

### Some Wonderful Feedback from the ILS Course

*“The course was run really well, made me feel at ease. I feel more confident now in emergency situations”*

*“The course was really enjoyable, I normally dread the role play but the delivery of the course was really interesting and made us all feel at ease. Thank You”*

*“Very thorough and really helped to consolidate knowledge to feel more prepared if a situation happens, thank you!”*

*“Lauren shared her knowledge and skills with us in the best manner, ensuring each of us understood and enabling us to ask even ‘silly’ questions. Session was comfortable and excellent learning environment, especially given that I had some anxieties about the assessment part of the day”*

*“Lauren was an amazing teacher, has lots of experience and very confident. I really enjoyed the course.”*

*“Lauren was fabulous, it is a very daunting course however Lauren made you feel at ease and was so knowledgeable”.*

*“Engaging and informative”*



Lauren Attwood, our Resus Officer with her much loved brand new dummies, all called Jeff! (don’t ask!!)





## Library Services

We are delighted to announce our new Library services with LUHFT commencing 1st July 2021 which will replace the current service provided by WUTH.

Our current arrangement with WUTH will end on the 31<sup>st</sup> July 2021 giving us a month's transition to the new library service which will provide CCC with remote access to:

- Access to professionally qualified Librarians and Para-Professional Library Assistants
- Access to a large library catalogue
- Remote access to books and textbooks, documents web forms for requesting documents and mediated literature searches
- Literature searching
- Athens account management
- Bibliographical databases:
  - Medline
  - Embase
  - CINAHL
  - PsychInfo
  - EmCare
  - BNI
  - AMED
  - HMIC
  - PubMed.
- Plus 7000+ A-Z of online Journals.

### Book loans and inter-library loan services:

- Book loans – Book stock will be centralised at the RLB site and available for loan. Library Members can borrow 8 items for 3 weeks.
- Book reservations and renewals.
- An inter-library loan service will be available, by which printed materials and electronic copies of articles will be supplied from other UK wide libraries (where available and subject to current Copyright regulations).

### Physical Library space and facilities at RLB & Aintree:

- Separate quiet study rooms with private individual carrels.
- A learning environment with adequate desks, chairs, telephone and other furniture.
- Access to self-service photocopying/ printing/ scanning device.
- The libraries will administer access to RLB & Aintree's Wi-Fi service

### Enquiry Service

The libraries will provide prompt assistance with basic and complex enquiries by phone, email or in person.

The libraries can also provide induction training and orientation sessions for new staff groups, training in access for key databases and a monthly evidence bulletin for horizon scanning.

For further details and access to a comprehensive Library website, please visit <http://www.royalliverpoolacademy.nhs.uk/services/library-information-service/>



## Radiotherapy News

### Third Year Student Placements

In June our third year Radiotherapy students completed their clinical placements with us here at Clatterbridge. Two of this group are from Hong Kong and have loved their time in Liverpool. An emotional day as ever as they have been with us for 3 years, but we wish them well in securing their first posts.

We have also recruited 4 of our Post Graduate Diploma graduates that completed their training with us in February. They have really enjoyed being back on the treatment floor – but paid now!



### New Radiotherapy Clinical Tutor.

From the 1<sup>st</sup> of June the Radiotherapy Education Team were delighted to welcome back Tracey Willems. Tracey is job sharing the Clinical Tutor role with Gwen Peters.

They can be contacted by emailing [ccf-tr.rtclinicaltutor@nhs.net](mailto:ccf-tr.rtclinicaltutor@nhs.net).

Would you like to contribute to our next edition of Education Matters@CCC Newsletter?  
Would you like your contact details to be added to the Education Key Contacts list below?  
Would you like to provide feedback on the Education Matters@CCC Newsletter?

If so please contact **Kate Greaves** [kate.greaves@nhs.net](mailto:kate.greaves@nhs.net) or **Jane Knight** [jane.knight1@nhs.net](mailto:jane.knight1@nhs.net)





## Education Key Contacts

|                                                                |                                                                                     |                                                                                      |
|----------------------------------------------------------------|-------------------------------------------------------------------------------------|--------------------------------------------------------------------------------------|
| Executive Leads for Education                                  | Jayne Shaw: Director of Workforce & OD<br>Dr Sheena Khanduri: Medical Director      | Ext 5189<br>Ext 5098                                                                 |
| Director of Medical Education/ Consultant in Clinical Oncology | Dr Isabel Syndikus                                                                  | Ext 5209                                                                             |
| Associate Director of Clinical Education                       | Kate Greaves                                                                        | Ext 5159                                                                             |
| MacMillan Senior Lecturers                                     | Angela Ashcroft<br>Jacquie Ball<br>Samantha Wills-Eve                               | Ext 5285<br>Ext 5402<br>Ext 5402                                                     |
| Practice Education Facilitators                                | Nicola Stobbart<br>TBC<br>Leane Owen                                                | Ext 5404<br>Ext 5404                                                                 |
| Head of Medical Workforce                                      | Chris Thompson                                                                      | Ext 5493                                                                             |
| Medical Education                                              | Kate Phelps                                                                         | Ext 5715                                                                             |
| Head of Learning & OD                                          | Steph Thomas                                                                        | Ext 5705                                                                             |
| Radiotherapy                                                   | <b>Radiotherapy Clinical Tutors:</b><br>Gwen Peters/Tracey Willems<br>Ext 5709/8408 | <b>Clinical Learning Facilitators:</b><br>Alex Hughes : Helen Dixon :<br>Lucy Jewell |
| Resuscitation Lead                                             | Lauren Attwood                                                                      | Bleep 9919                                                                           |
| Radiology                                                      | <b>Radiology Clinical Tutor:</b><br>Katie Seager<br>CCC-W Ext 5057 :                | <b>Deputy Clinical Tutors:</b><br>Elle Aspden : Alaina Grant<br>CCC-L Ext 8452       |

Clinical Education at The Clatterbridge Cancer Centre

Email: [ccf-tr.clinicaleducation@nhs.net](mailto:ccf-tr.clinicaleducation@nhs.net)

Website: <https://education.clatterbridgecc.nhs.uk>

Tel: 0151 556 5790